

Domestic violence and abuse in Leicester 2016/17

Operation Encompass DSL Briefing 29/01/18

Estimated number of people affected in our area since the age of 16

Sexual and domestic violence affects a large number of people nationally

- 26% of women and 14% of men experienced domestic abuse since the age of 16



Domestic violence	Sexual violence	Total
24,391	6,202	30,593
45,574	34,593	80,168



- 37% of people **never** tell an official agency

Estimated number of children and young people affected by domestic violence and abuse in Leicester



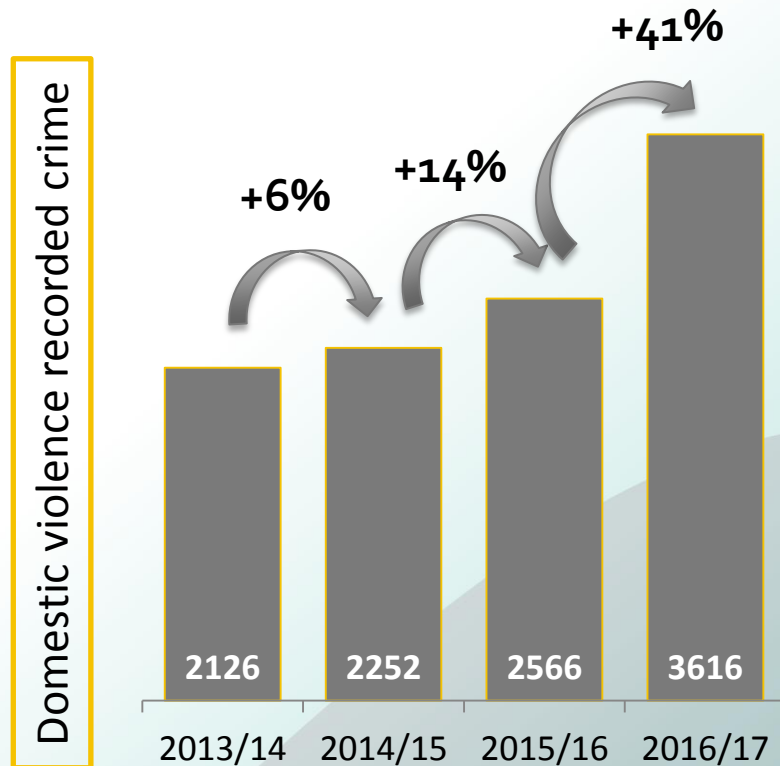
97,951+

Children and young people estimated to be affected by domestic violence and abuse

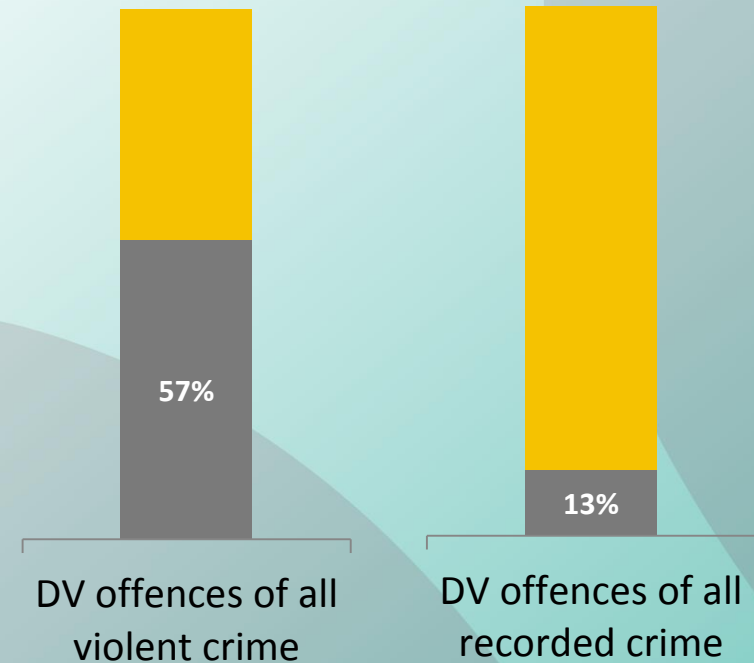
- **70%** of adults affected by domestic violence and abuse had **children** in the household
- **69,965** adults affected by **domestic abuse** and violence in our area
- An average of 2 children per household (Insights)

Domestic violence recorded crime and offences in Leicester

On average the volume of domestic violence offences increased 16% each year in the last 5 years



Proportion of domestic violence crime 2016/17



Picture of harm (Leicester, Leicestershire & Rutland)



Average length of abuse is **6 years**

855 cases were discussed at a Multi Agency Risk Assessment Conference (MARAC) due to the victim being at high risk of homicide or serious injury



1,135 victim – survivors were identified as **repeat victims** in domestic violence offences

143 victims identified by the police had **four or more** incidents reported within the **last 12 months**



272 perpetrators identified by the police as serial offenders of domestic violence

10 serial perpetrators accounted for **44** victims

Higher than average **multiple perpetrators; financial hardship;** challenges with **mental health;** and struggles to find **safe housing**

Domestic homicide and serious case reviews (featuring domestic violence): LLR

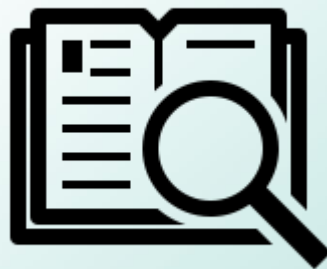
since 2011:



13

Domestic homicides

2016:



4 of 5

Serious Case Reviews
(SCRs)

since 2009:



8

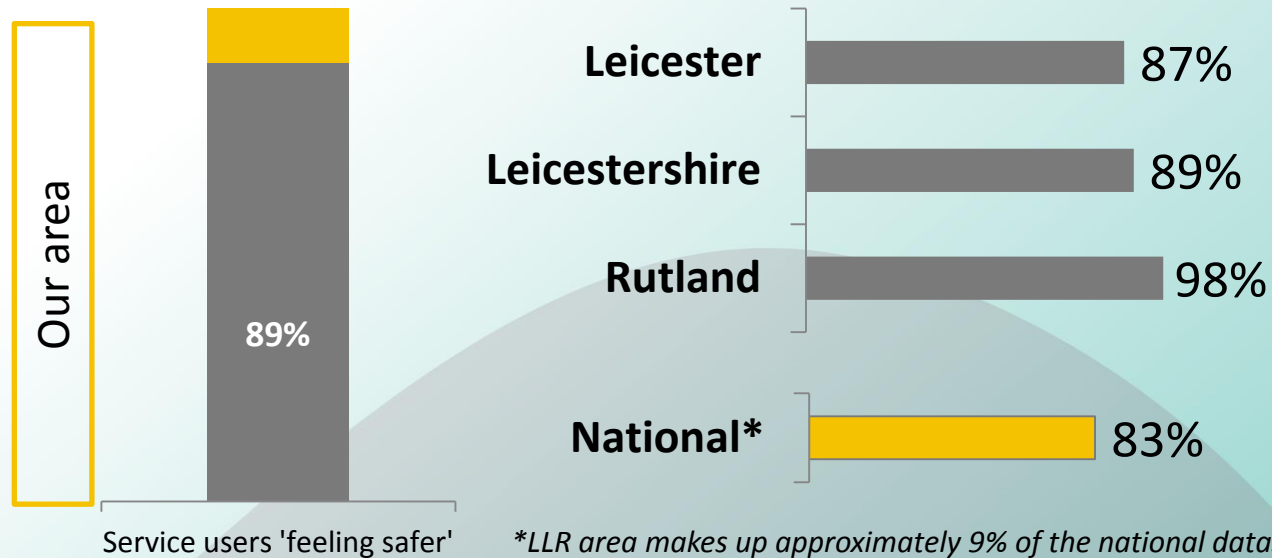
Child deaths

DSV Services Commissioned by Leicester City Council

- One to one casework
- Counselling and play therapy
- Group programmes
- Safe Homes
- Perpetrator Interventions
- Training programme
- Child to parent violence
- 6 day a week helpline, free phone, daytime and evenings
- Creche and respite activities
- Drop ins

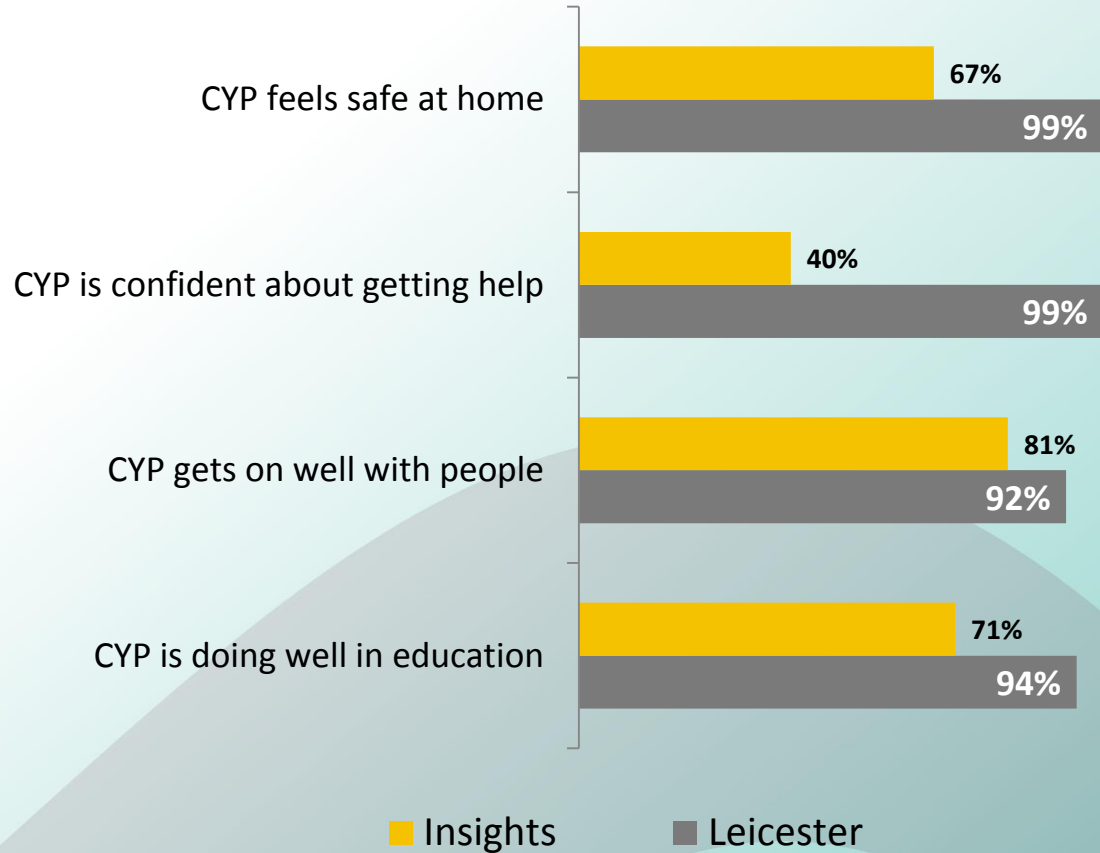
Outcomes for victim-survivors: 'Feeling safer'

Outcomes for service users in our area were higher than the national average



Outcomes for children and young people

Outcomes from CYP Commissioned City Service (Leicester)



“encourages schools to play an integral part in supporting children who are exposed to domestic violence in order to minimise the impact of exposure to abuse. The project runs on the basis that the single most critical factor in how well children cope is the presence of at least one loving and supportive adult.”

Children’s Commissioner 2016