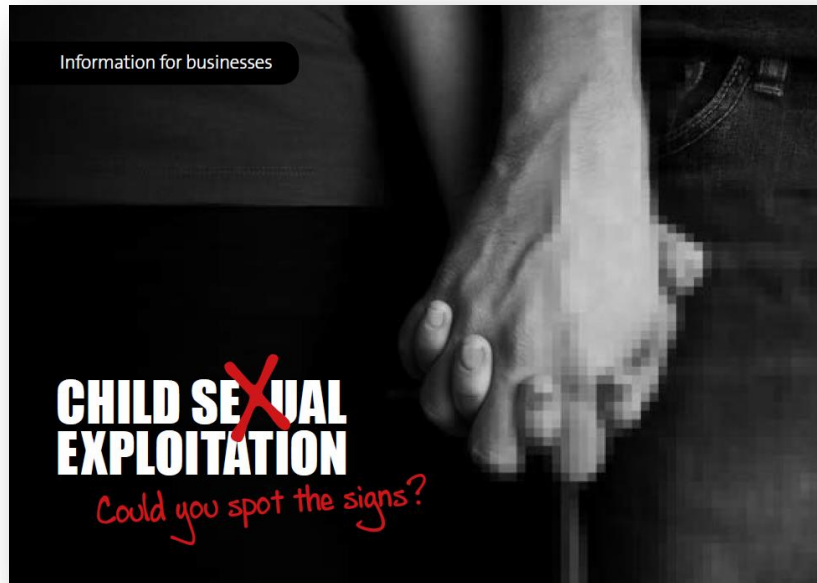


Child sexual exploitation



Developing the Local Response
The key role of schools

What are we worried about?

- The local authorities, police, NHS, schools and other partner agencies are worried that children and young people across Leicester, Leicestershire and Rutland from all genders, ages and backgrounds are being harmed and exploited by adults and sometimes by other young people.
- We are worried that these adults and/or young people acting on their own or in groups are using their power to sexually abuse and exploit children and young people online and in the real world.
- We are worried that this is having a long term impact on children and young people's lives, health and education and leading to family break ups.

In the words of a victim of CSE

I am a teenager.

I was sexually exploited by a 40 year old man.

I started using cannabis when I was worried about my Mum's health and because my Dad didn't seem to care about me.

I tried M/Cat for the first time when out with some friends because they looked like they were having fun.

I started to do more M/Cat but it was expensive.

My behaviour changed and I started missing lessons at school.

My relationship at home became very difficult with Mum.

It came to light that there were inappropriate pictures of me on Facebook with an older man.

My Mum was told.

The pictures were reported to the Police and my case was referred to the CSE Team.

I told the team that sex had happened during my time at the man's house. The sex performed had been instead of payment for M/Cat.

They said this was abuse - I didn't agree.

I understand now that I was groomed and exploited.

What can you do?

- Understand what makes a young person vulnerable
- Recognise the warning signs
- Consider the wider picture
- Use the [CSE Risk Assessment Tool](#) if you have a concern and are unsure
- Seek help and advice

Recognise the warning signs

When young people

miss school or lessons

misuse alcohol or drugs

are secretive with mobiles or computers

change their appearance, personality or behaviour

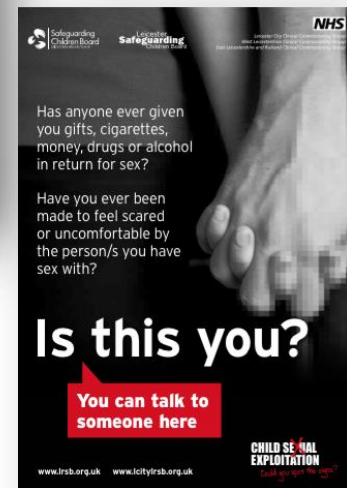
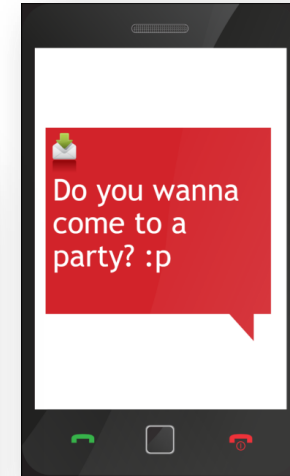
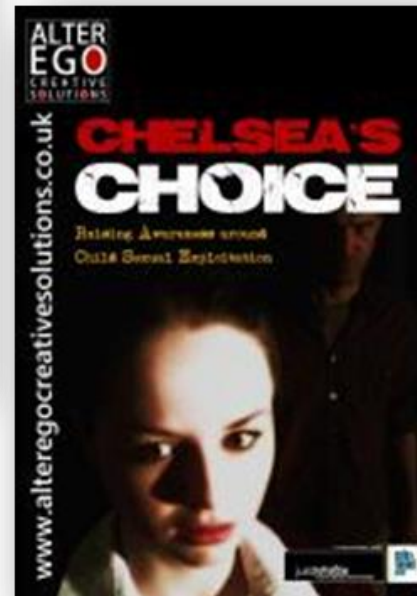
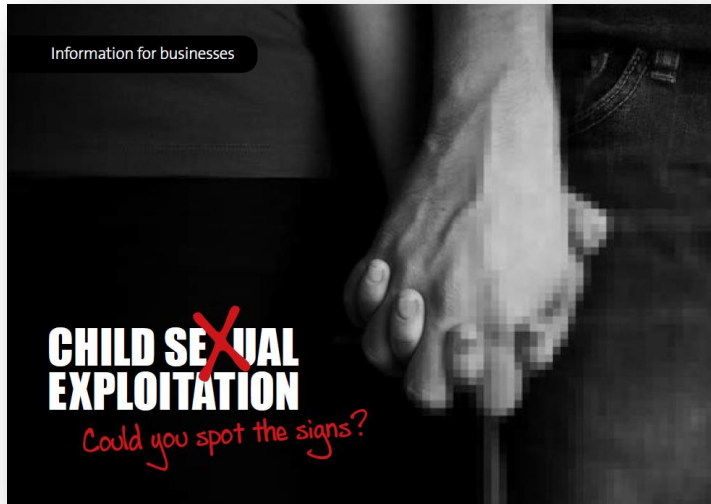
change friendship groups

Ask yourself – are they being groomed for sexual exploitation?

CHILD SEXUAL EXPLOITATION
Could you spot the signs?

The diagram features a white triangle on a black background. Six white lines originate from the left side, each pointing towards the center of the triangle. These lines are associated with the following warning signs: 'miss school or lessons', 'misuse alcohol or drugs', 'are secretive with mobiles or computers', 'change their appearance, personality or behaviour', and 'change friendship groups'. A red double-headed arrow points from the right side of the triangle towards the text 'Ask yourself – are they being groomed for sexual exploitation?'. In the bottom right corner, the text 'CHILD SEXUAL EXPLOITATION' is written in white, with a red 'X' over the word 'SEXUAL'. Below it, the question 'Could you spot the signs?' is written in a red, handwritten-style font.

LLR awareness raising campaign



How schools can help

- Schools should promote healthy relationships through their whole school approach, child protection policy, PSHE & SRE policies, behaviour policy, and anti-bullying work.
- Senior management and governor commitment to deal with the issue of CSE is needed to ensure it is done in an appropriate and supportive way.
- Designated Safeguarding Lead could organise sessions
 - for all staff to raise awareness of the risk factors, signs and indicators, useful resources and details of local services
 - for parents, perhaps in conjunction with specialist services.
- Display posters and distribute leaflets to advertise services that children can use to get information and advice about CSE.
- Link teaching with relevant school policies, including those on PSHE, SRE, e-safety, anti-bullying and child protection will help to ensure clear links with the whole school approach.

How schools can help

We advocate that schools

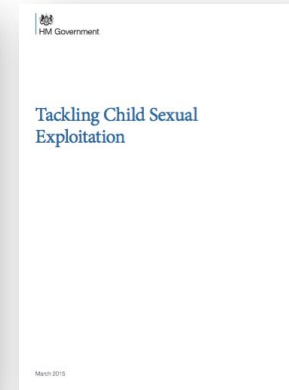
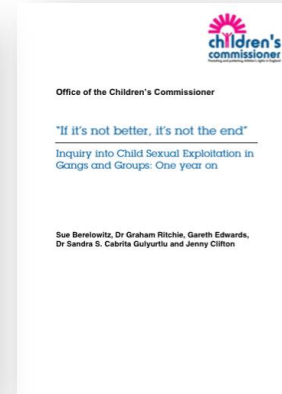
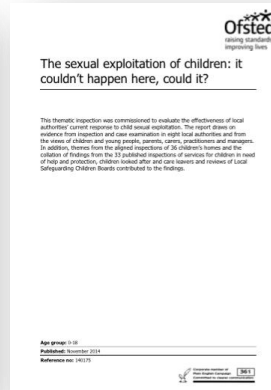
Adopt and use the PSHE Association's

- PSHE education programme of study, key stages 1 to 4
<https://www.pshe-association.org.uk/>

Embed CSE and Consent Education within the entitlement curriculum of all students within your school

- Curriculum support and staff training to achieve the above is available from Leicester City PSHE and Citizenship Advisory Service (PCAS) contact:
- Paul Conneally paul.conneally@leicester.gov.uk
- Susan Marshall susan.marshall@leicester.gov.uk

Further reading



http://www.rotherham.gov.uk/downloads/file/1407/independent_inquiry_cse_in_rotherham

<http://anncoffeymp.com/wp-content/uploads/2014/10/Real-Voices-Final.pdf>

<https://www.gov.uk/government/publications/sexual-exploitation-of-children-ofsted-thematic-report>

http://www.childrenscommissioner.gov.uk/content/publications/content_920

<https://www.gov.uk/government/publications/tackling-child-sexual-exploitation--2>